

ASX Release | 29 June 2026

Ruddygore Project: Expanded Gravity Survey Identifies Multiple High-Priority Targets at Ruddygore.

Highlights:

- Major gravity survey has significantly upgraded Ballymore's Ruddygore Project, identifying multiple high-priority targets, reinforcing the potential for a district-scale mineral system within the historic Chillagoe Mining District.
- The Ruddygore Project hosts numerous historic copper, gold, silver, lead and zinc mines and workings which are now being re-evaluated with modern exploration techniques.
- At Torpy's, gravity anomalies align closely with recent high-grade drill results and surface geochemistry, with additional targets recognised in Torpy's area that warrant drill-testing.
- Preliminary modelling has also identified several new targets with geological signatures similar to major mineral systems in the Chillagoe district supported by coincident gravity, magnetic, electromagnetic and geochemical anomalies, creating compelling drill targets:
 - MAN03
 - Eleventh
 - Armada East
 - Maniopota
- Final data and models are expected shortly and will be integrated with existing datasets to rank and prioritise a portfolio of high-confidence drill targets for future testing.
- This Ruddygore gravity survey, along with a geophysics survey at Dittmer, are being supported by A\$383,000 in Queensland Government Collaborative Exploration Initiative funding, helping accelerate exploration while reducing costs to shareholders.

Ballymore Resources Limited (ASX: BMR) has completed an expanded high-resolution ground gravity survey across its highly prospective Ruddygore Project near Chillagoe in North Queensland. The survey has identified multiple compelling gravity anomalies that validate recent discoveries and define a pipeline of new high-priority drill targets across the project.

Ballymore Managing Director, Mr David A-lzzeddin, said:

"Our strategy at Ruddygore has been to apply modern exploration techniques, including this gravity survey, to evaluate the exceptional geological endowment of the historic Chillagoe Mining District. These preliminary gravity results have exceeded our expectations and reinforce our view that Ruddygore has the potential to host multiple significant mineral systems beyond our high-grade Torpy's discovery.

While Torpy's continues to deliver encouraging results, the gravity survey suggests it represents part of a much larger mineralised corridor. We have also identified several new gravity anomalies, many coinciding with historic mines and workings and supportive geochemical, magnetic and electromagnetic signatures, significantly expanding our pipeline of high-priority drill targets.

The early results of this gravity survey compelled us to expand the survey while crews remained in the field and the resultant data has yielded a number of exceptional targets. As final processing and three-dimensional modelling are completed, we expect to refine and prioritise a portfolio of drill-ready targets across one of Queensland's most prospective historic mining districts."

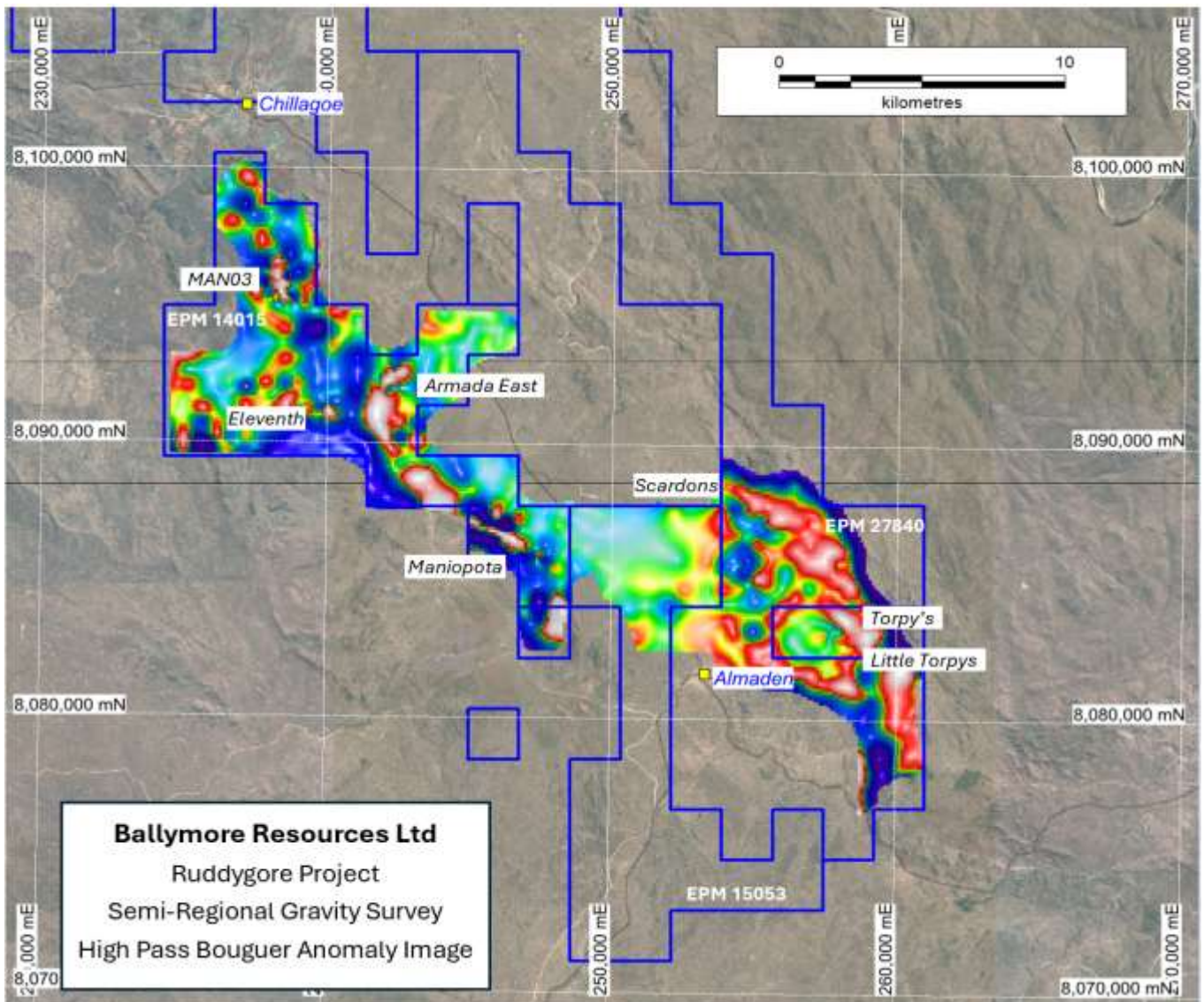


Figure 1 – Ruddygore gravity high pass filter Bouguer anomaly image based on preliminary gridded data.

Gravity Survey Expanded Following Strong Early Results

Ballymore Resources has completed an expanded high-resolution ground gravity survey across its Ruddygore Project near Chillagoe in North Queensland. The survey represents another important step in Ballymore's strategy of applying modern geophysical techniques to unlock the significant remaining potential of one of Queensland's major historic mining districts. While the Chillagoe region has produced copper, gold, silver, lead and zinc from numerous deposits over more than a century, much of the district has never been systematically explored using contemporary geophysical methods or integrated geological models.

The gravity survey commenced in May 2026 and was designed to identify dense massive sulphide and skarn systems, with a regional 500m-spaced grid (618 stations) and detailed coverage originally planned over key prospects including Torpy's, MAN03, Eleventh and Armada East.

Preliminary results exceeded expectations, identifying multiple compelling gravity anomalies across the project. Importantly, the survey has not only validated Ballymore's high-grade Torpy's silver-lead-zinc discovery but also highlights several new priority targets associated with historic mines and workings, skarn alteration, polymetallic soil anomalies, magnetic features and electromagnetic conductors.

The strength of the preliminary results prompted Ballymore to immediately expand the program, adding further detailed coverage at Torpy's–Little Torpy's, Armada East and Maniopota to refine key anomalies. A total of 1,948 gravity stations were ultimately completed.

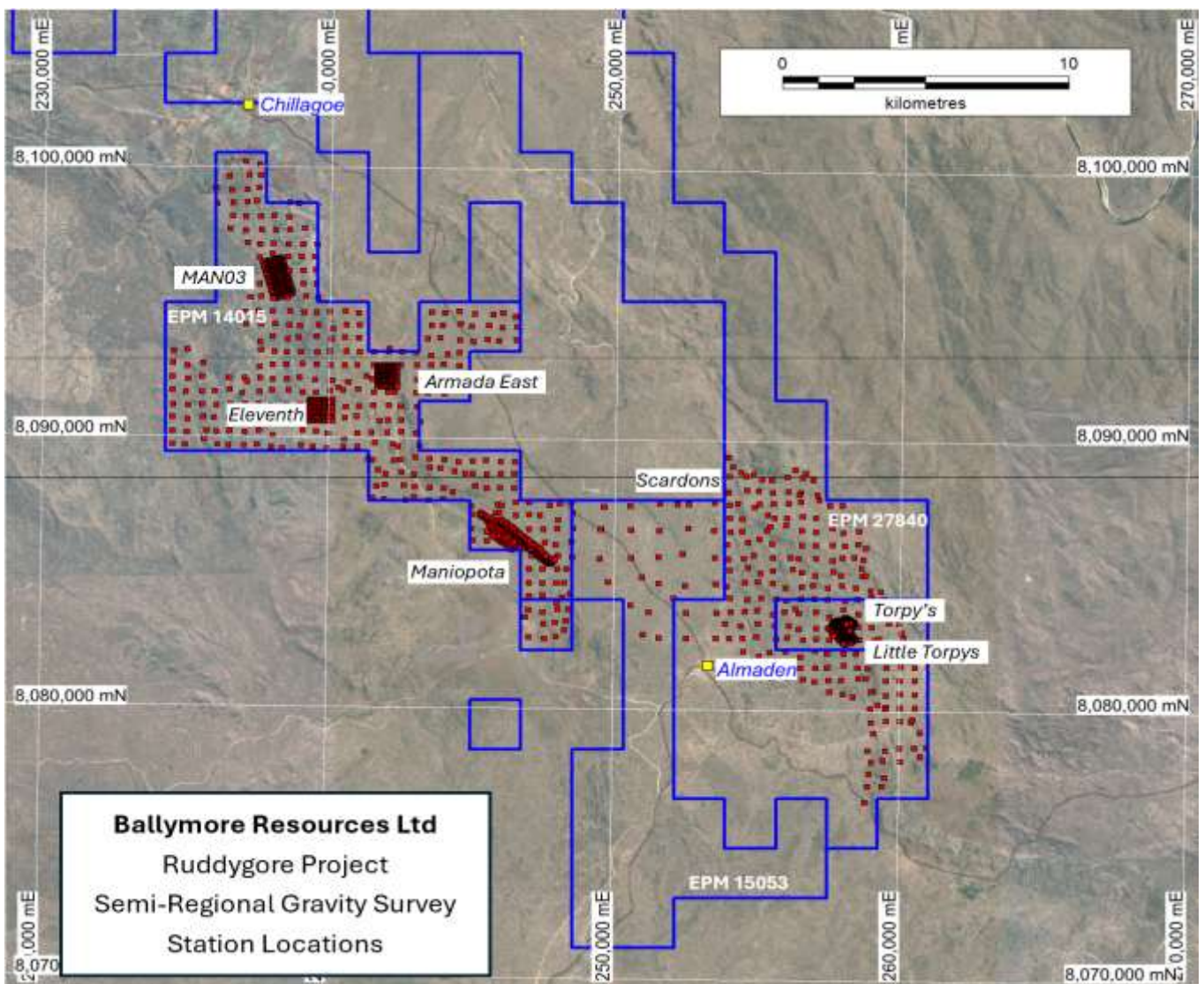


Figure 2 – Ruddygore gravity data – survey station locations.

Together, these results significantly expand the exploration opportunity at Ruddygore beyond the Torpy's discovery and support the Company's view that the project has the potential to host multiple mineralised systems within a district-scale corridor.

These results have highlighted a number of notable gravity anomalies in the Torpy's – Little Torpy's area, as well as strong, discrete anomalies associated with MAN03, Eleventh, Armada East and Maniopota.

Significant Targets Identified

- **Torpy's:** The survey has identified several discrete gravity anomalies in the Torpy's area, including one that directly coincides with Ballymore's high-grade 2025 drill intersections (including BTPRC002¹, BTPRC004² and BTPRC005³). These anomalies also align with elevated lead and zinc soil geochemistry, providing strong independent validation of the mineralised system while highlighting nearby areas with potential to host additional high-grade mineralisation.
- **Little Torpy's:** A strong discrete gravity anomaly has been identified immediately north of historic workings and Ballymore drill hole BTPRC007⁴. The anomaly coincides with a significant lead-zinc soil anomaly and represents a compelling target for follow-up drilling.
- **MAN03:** Already recognised as a high-quality electromagnetic target⁵, MAN03 now also hosts a substantial gravity anomaly measuring approximately 750m by 300m that coincides with magnetic features, mapped skarn alteration and hydrothermal breccias. The convergence of multiple datasets significantly enhances confidence in the prospect.
- **Armada East:** The survey delineated a 400m by 300m gravity anomaly associated with extensive skarn alteration, historical copper-gold workings, polymetallic soil anomalies and a distinctive magnetic signature, further strengthening this large-scale exploration target.
- **Eleventh:** A discrete gravity anomaly measuring approximately 400m by 200m coincides with mapped breccias, skarn alteration and historic workings and a complex magnetic anomaly, supporting its potential as a Red Dome-style mineral system prospective for gold, silver and base metals.
- **Maniopota:** The survey defined a significant gravity response associated with extensive skarn alteration with the strongest anomaly being 500m x 100m. Ballymore previously identified a 6km-long copper-lead-zinc ± silver-gold soil anomaly coincident with EM conductors⁵ that coincides with this gravity anomaly. Located within the highly prospective Palmerville Fault Corridor, the target has the potential to host a substantial mineral system.

Building a Pipeline of Future Discoveries

Final data processing and three-dimensional modelling are expected shortly and will be integrated with Ballymore's electromagnetic, magnetic and geochemical datasets to generate a portfolio of high-confidence drill targets across the Ruddygore Project.

The integration of these complementary datasets is expected to improve drill targeting accuracy, reduce exploration risk and maximise the potential for further discoveries within one of North Queensland's most prospective mineral corridors.

¹ ASX Announcement - 4 December 2025 "First assays from Torpy's confirm exceptional Ag-Zn-Pb grades"

² ASX Announcement - 15 December 2025 "Torpy's drilling hints at major find – new zone discovered"

³ ASX Announcement - 14 January 2026 "Torpy's BTPRC005 returns 10m @ 483g/t Silver & 19.3% Lead"

⁴ ASX Announcement - 6 February 2026 "Initial Torpy's step out hole confirms potential for a project of significant scale"

⁵ ASX Announcement - 2 September 2025 "Maniopota EM Survey at Ruddygore Project identifies significant polymetallic targets"

Why Gravity?

Gravity surveys measure subtle variations in rock density, making them particularly effective for identifying dense massive sulphide bodies and skarn systems that may be concealed beneath cover.

The Chillagoe district hosts numerous skarn-related and massive sulphide deposits where mineralisation is substantially denser than surrounding rocks. The strong gravity anomalies identified at Ruddygore, particularly where they coincide with drilling, geochemistry and electromagnetic responses, provide valuable vectors towards potential mineral discoveries and help prioritise future drilling.

By combining gravity data with existing geological, geochemical and geophysical information, Ballymore is building an increasingly robust exploration model designed to maximise the probability of new discoveries across the project.

Torpy's Discovery Continues to Grow

The Company's work has demonstrated that mineralisation in the Torpy's occurs at the intersection of major fault structures, creating high-grade mineralised shoots that remain largely untested.

The current drilling campaign is building on Ballymore's successful 2025 discovery program, which delivered exceptional silver-lead-zinc-indium intersections including:

BTPRC005: 23m @ 215.6 g/t Ag, 8.55% Pb, 1.99% Zn from 130m⁶, including
10m @ 483.2 g/t Ag, 19.35% Pb, 2.82% Zn & 16.5 g/t In from 131m⁶, including
7m @ 650.7 g/t Ag, 25.37% Pb, 3.01% Zn & 14.2 g/t In from 132m⁶

The current program continues to intersect significant massive to semi-massive sulphide mineralisation while expanding the known footprint of the discovery. Recent drilling has targeted potential up-dip extensions of previously identified shoots and has successfully demonstrated continuity of mineralisation while identifying additional mineralised structures beyond the historic mine area.

Torpy's remains at an early stage of exploration, with mineralisation open in multiple directions and numerous structural targets remaining untested.

The Company expects several important catalysts over the coming months, including:

- Assay results from the current drilling campaign.
- Additional testing of newly identified mineralised shoots.
- Final results from the Ruddygore gravity survey.
- Generation of new drill targets across the broader project area.

With drilling continuing to expand the footprint of mineralisation, multiple high-grade shoots already identified and assays pending, Ballymore believes Torpy's is rapidly emerging as one of Queensland's most exciting new silver-lead-zinc discoveries within one of Queensland's most productive historic mining districts. In addition, this gravity survey is expected to deliver further exciting drill targets.

⁶ Refer to ASX Announcement "Torpy's BTPRC005 returns 10m @ 483g/t Silver & 19.3% Lead" dated 14 January 2026

About Ruddygore Project

The Ruddygore Project is located adjacent to the town of Chillagoe in North Queensland and approximately 150km west of Cairns. It covers an area of 556km². Historically, Chillagoe was a significant mining and smelting centre that was most active from 1888 to 1927, prior to further substantial production of gold, copper and silver from the Red Dome mine from 1986 to 1997.

The project area hosts a range of different deposit styles including porphyry copper-gold deposits (e.g., Ruddygore), skarn-hosted copper-gold-lead-zinc skarn deposits (e.g., Red Dome, Mungana, Maniopota), sediment-hosted massive sulphide lead-zinc-silver deposits (e.g., Torpy's), tungsten-molybdenum greisen deposits (Scardon's Top Camp & Bottom Camp) and other intrusive-related gold system (IRGS) deposits (e.g., Kidston). The Project area is poorly explored, and Ballymore is systematically applying modern exploration methods to test these historic mines and new targets with the aim of delineating major gold and base metal deposits.

Planned Activities

The Company has substantial work programs planned for 2026, including:

- June 2026 Complete Torpy's RC drilling program
- July 2026 Receive and model final Ruddygore gravity data
- July 2026 Commence Dittmer CEI-funded MT Survey
- Q3 2026: Complete development of the upgraded 4 level access at Dittmer.
- Q3 2026 Commence Stage 6 drill program from newly developed southern exploration drive
- Q3 2026 Dittmer bulk sample recovery
- Q4 2026 Maiden MRE for Dittmer, pending completion of Stage 6 drill program

Approved by the Board of Ballymore Resources Limited.

For further information:

David A-Izzeddin
Managing Director
daizzeddin@ballymoreres.com

Gareth Quinn
Media and Investor Relations
gareth@republicir.com.au
0417 711 108

Competent Persons Statement

The information in this announcement that relates to Exploration Results is based on, and fairly represents, information compiled or reviewed by Mr David A-Izzeddin. Mr A-Izzeddin is a Member of The Australasian Institute of Geoscientists and is a Director and an employee of the Company. Mr A-Izzeddin has sufficient experience which is relevant to the style of mineralisation and type of deposit under consideration and to the activity which he is undertaking to qualify as a Competent Person as defined in the 2012 Edition of the 'Australasian Code for Reporting of Exploration Results, Mineral Resources and Ore Reserves'. Mr A-Izzeddin consents to the inclusion in the announcement of the matters based on his information in the form and context in which it applies. The Exploration Targets described in this announcement are conceptual in nature and there is insufficient information to establish whether further exploration will result in the determination of Mineral Resources.

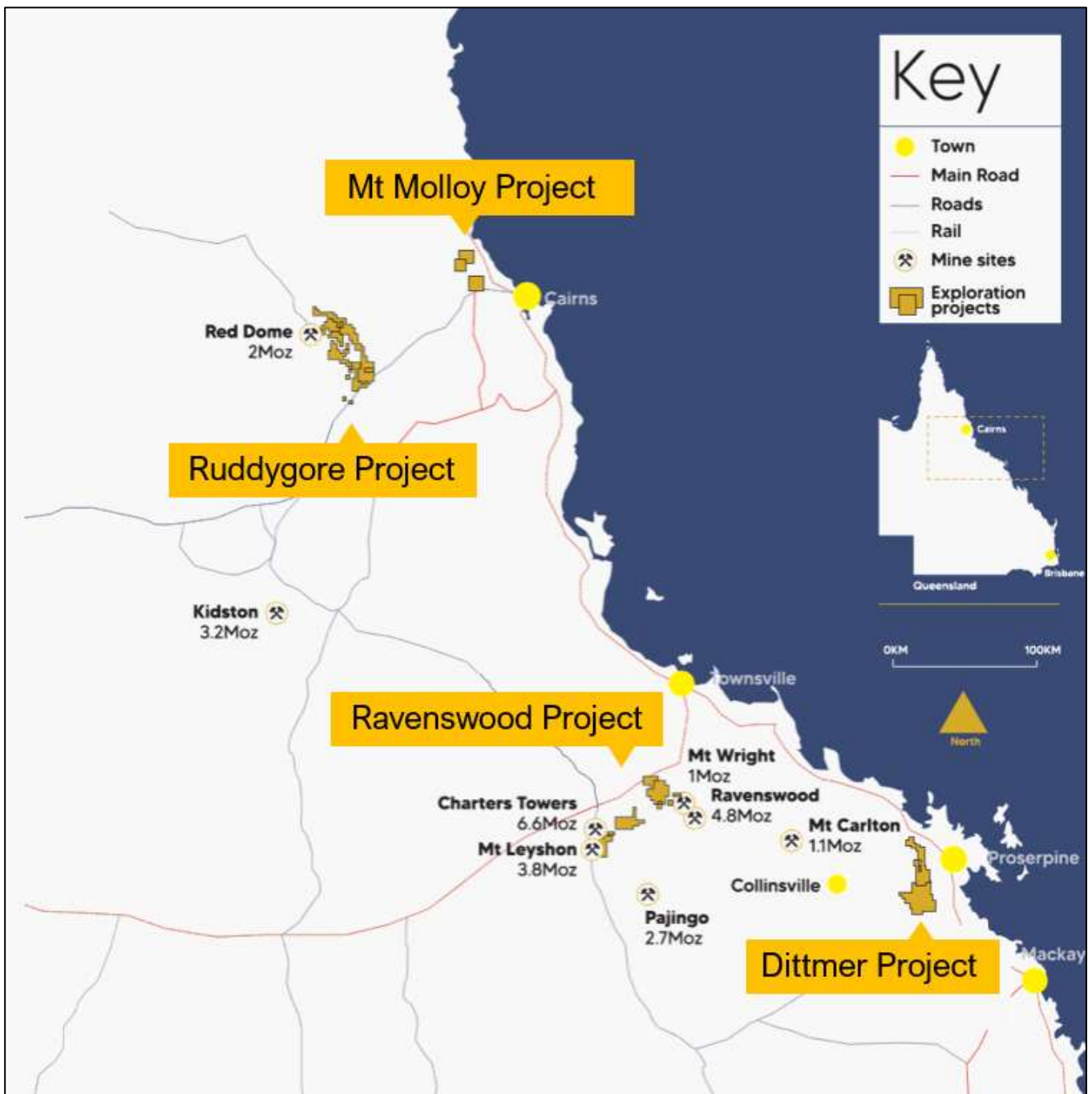
Forward-Looking Statements

Certain statements made during or in connection with this statement contain or comprise certain forward-looking statements regarding the Company's Mineral Resources, exploration operations and other economic performance and financial conditions as well as general market outlook. Although the Company believes that the expectations reflected in such forward-looking statements are reasonable, such expectations are only predictions and are subject to inherent risks and uncertainties which could cause actual values, results, performance or achievements to differ materially from those expressed, implied or projected in any forward-looking statements and no assurance can be given that such expectations will prove to have been correct.

Accordingly, results could differ materially from those set out in the forward-looking statements as a result of, among other factors, changes in economic and market conditions, delays or changes in project development, success of business and operating initiatives, changes in the regulatory environment and other government actions, fluctuations in commodity prices and exchange rates and business and operational risk management. Except for statutory liability which cannot be excluded, each of the Company, its officers, employees and advisors expressly disclaim any responsibility for the accuracy or completeness of the material contained in this statement and excludes all liability whatsoever (including in negligence) for any loss or damage which may be suffered by any person as a consequence of any information in this statement or any error or omission. The Company undertakes no obligation to update publicly or release any revisions to these forward-looking statements to reflect events or circumstances after today's date or to reflect the occurrence of unanticipated events other than required by the Corporations Act and ASX Listing Rules. Accordingly, you should not place undue reliance on any forward-looking statement.

Ballymore Resources: Unlocking Queensland’s gold and base metals potential.

Ballymore Resources (**ASX:BMR**) is a Queensland-focused exploration and development company advancing a portfolio of gold and base metals projects in some of the state’s most prolific mineral belts. The Company’s flagship Dittmer Project, located near Proserpine, hosts the historic high-grade Dittmer gold mine and is emerging as a broader gold-copper growth story, with drilling confirming a repeat of the Duffer Lode and ongoing work aimed at supporting a maiden Mineral Resource Estimate. Ballymore also holds the Ruddygore, Ravenswood and Mount Molloy projects, providing exposure to multiple advanced exploration targets across gold, silver, copper, lead and zinc. With two granted Mining Leases, a large Queensland tenement position and an experienced team with a strong discovery and development track record, Ballymore offers investors leveraged exposure to near-term exploration catalysts and the potential reactivation of a historically high-grade mining asset.



APPENDIX 1. RUDDYGORE – JORC CODE TABLE 1 CHECKLIST OF ASSESSMENT AND REPORTING CRITERIA

Sampling Techniques and Data

CRITERIA	JORC Code Explanation	Commentary
SAMPLING TECHNIQUES	<p>Nature and quality of sampling (e.g., cut channels, random chips, or specific specialised industry standard measurement tools appropriate to the minerals under investigation, such as down hole gamma sondes, or handheld XRF instruments, etc). These examples should not be taken as limiting the broad meaning of sampling.</p>	<p>Exploration has been undertaken at the Project since the early 1900s. Sampling methods have included surface rock chip and trenching, channel samples taken from underground exposures, soil, and stream sediment samples, together with drill hole samples comprising open hole percussion, RC percussion, and diamond core samples.</p> <p>Geochemistry from soil and stream sediment samples is used semi-quantitatively to guide further exploration and is not used for Mineral Resource estimation.</p> <p>The accuracy of rock chip geochemistry is generally high but these samples are spot samples and generally not used in Mineral Resource estimation.</p> <p>The accuracy of trench and channel geochemistry is generally high. These samples are regularly used in Mineral Resource estimation.</p> <p>The quality of open hole percussion drilling is generally low because there is a likelihood of contamination of samples. Consequently, these samples are generally used to guide further exploration and are not used for Mineral Resource estimation.</p> <p>The quality of RC percussion drilling is generally medium – high because the method significantly reduces the potential of contamination, unless there is a lot of groundwater or badly broken ground. Consequently, these samples can be representative of the interval drilled and can be used for Mineral Resource estimation.</p> <p>The quality of diamond coring is generally medium – high because the method is designed to sample the rock mass effectively in most conditions. Consequently, these samples can be representative of the interval drilled and can be used for Mineral Resource estimation.</p> <p>Ballymore stream sediment samples collected were screened to -80# with a 150 g sample collected. Soil samples were collected on a grid pattern. The top 10 cm of cover material was removed and regolith was sieved to -80# with a 150 g sample collected. Rock chip samples were collected from outcrop, subcrop, float material, as well as mullock samples.</p> <p>Ballymore completed a SkyTEM helicopter-borne, time-domain EM survey at Ruddygore. A total of 567.47 line-kms of AEM were flown at 200m spacing in a NE-SW orientation. The SkyTEM312HP system uniquely acquires at transmitter frequencies as low as 12.5Hz, using a high-power square wave form for enhanced resolution, a wide transmitter pulse width for greater target energisation, and long transmitter OFF times for imaging deep and conductive targets.</p> <p>Ballymore completed a semi-regional ground-based gravity survey over a 32-km corridor from south of Chillagoe to Torpy's in 2026, comprising 1,948 gravity stations. The survey was a high-precision GNSS-positioned ground gravity survey completed by Daishsat Geodetic Surveyors. The survey comprised a regional survey on a notional 500m grid across the survey area. In addition, several priority prospects underwent detailed surveying at a notional station spacing of 50m 100m at MAN03, Eleventh and Maniopota and at a station spacing of 50m x 50m at Armada East. At Torpys a detailed survey was completed at a notional 25m x 25m spacing over the mine area within a greater area surveyed at 50m x 50m. The survey was completed using Leica GX1230 Real-Time-Kinematic (RTK) GNSS giving a set out accuracy better than 5cm (where terrain allows).</p>

CRITERIA	JORC Code Explanation	Commentary
	<p>Include reference to measures taken to ensure sample representivity and the appropriate calibration of any measurement tools or systems used.</p> <p>Aspects of the determination of mineralisation that are Material to the Public Report. In cases where 'industry standard' work has been done this would be relatively simple (e.g., 'reverse circulation drilling was used to obtain 1 m samples from which 3 kg was pulverised to produce a 30 g charge for fire assay'). In other cases, more explanation may be required, such as where there is coarse gold that has inherent sampling problems. Unusual commodities or mineralisation types (e.g., submarine nodules) may warrant disclosure of detailed information.</p>	<p>No information is available documenting measures to ensure sample representivity for surface sampling methods collected prior to Ballymore. These methods are not used for Mineral Resource estimation.</p> <p>Ballymore collected field duplicates during its soil sampling program to monitor sample representivity.</p> <p>Trench and channel sampling is an established method designed to deliver a representative sample of the interval being sampled.</p> <p>RC drilling is an established method designed to minimise drilling-induced contamination of samples, aimed to deliver a representative sample of the interval being drilled. Diamond drilling is also an established method aimed at collecting representative samples of the interval being drilled.</p> <p>Economic gold mineralisation is measured in terms of parts per million and therefore rigorous sampling techniques must be adopted to ensure quantitative, precise measurements of gold concentration. If gold is present as medium – coarse grains, the entire sampling, sub-sampling, and analytical process must be more stringent.</p> <p>Where the main mineralisation is copper, this is measured as a percentage and therefore sampling techniques can be somewhat less rigorous than for gold.</p> <p>At Ruddygore, the main target is copper (Ruddygore Prospect) and silver-lead-zinc-copper-gold (Maniopota and Torpy's Crooked Creek Prospect). Procedures used to manage sampling issues are documented elsewhere in relevant sub-sections of this table.</p>
DRILLING TECHNIQUES	Drill type (e.g., core, reverse circulation, open-hole hammer, rotary air blast, auger, Bangka, sonic, etc) and details (e.g., core diameter, triple or standard tube, depth of diamond tails, face-sampling bit, or other type, whether core is oriented and if so, by what method, etc).	<p>A number of drilling programs have been recorded across the Project area. Ballymore had not completed any drilling on the Project at the time of the rock chip sampling.</p> <p>Most drilling was reported to be diamond but is inconsistently documented.</p> <p>Between 1959 and 1995 a total of 54 diamond and percussion drill holes have been completed within the Ruddygore Project area for 4,138.6m. Drilling has focussed on the Ruddygore mine area (26 holes for 1,631m), Maniopota (14 holes for 1,059m), Torpy's Crooked Creek (2 holes for 421.6m) and Metal Creek (12 holes for 1,027m).</p> <p>Ballymore completed six RC / diamond drillholes for 1,799.92m including 621.4m of 5¼" RC and 1,178.52m of HQ triple tube size in 2022. All holes were oriented using an Ace instrument.</p> <p>Ballymore has completed an RC drill program at Torpy's Crooked Creek.</p>
DRILL SAMPLE RECOVERY	<p>Method of recording and assessing core and chip sample recoveries and results assessed.</p> <p>Measures taken to maximise sample recovery and ensure representative nature of the samples.</p>	<p>For most programs, no information is available documenting if sample recovery was routinely recorded. MIM (1960) reported core recoveries of typically >95% at Ruddygore, as did Le Nickel (1977) at Torpy's Crooked Creek.</p> <p>No assessment of sample recovery has been made for historic drilling.</p> <p>Sample recovery for Ballymore diamond drilling in 2022 was measured on a per-run basis and generally reported to be greater than 99%.</p> <p>No information is available documenting measures to maximise sample recovery or ensure collection of representative samples.</p>

CRITERIA	JORC Code Explanation	Commentary
	Whether a relationship exists between sample recovery and grade and whether sample bias may have occurred due to preferential loss/gain of fine/coarse material.	<p>Ballymore has utilised triple tube for diamond drilling to maximise recovery.</p> <p>No assessment has been completed to determine if there is a relationship between sample recovery and grade, and whether there is any potential for sample bias associated with the drilling used to date.</p>
LOGGING	Whether core and chip samples have been geologically and geotechnically logged to a level of detail to support appropriate Mineral Resource estimation, mining studies and metallurgical studies.	<p>Most historic drill logs document logging for lithology, structure, alteration, mineralisation, and veining. No core photography is available.</p> <p>Logging information for historic drilling is possibly adequate to support future Mineral Resource estimation but will be reassessed if required.</p> <p>Ballymore drilling: drill core was logged for lithology, structure, alteration, mineralisation, and veining, while percussion chips were logged for lithology, alteration and mineralisation, which is deemed to be appropriate for the style of mineralisation and the lithologies encountered. All core was photographed. Logging information is adequate to support Mineral Resource estimation. Information to support geotechnical studies is available.</p>
	Whether logging is qualitative or quantitative in nature. Core (or costean, channel, etc) photography.	Logging of core is mostly qualitative, except for some semi-quantitative logging of sulphide content, quartz veining, RQD, and geotechnical parameters.
	The total length and percentage of the relevant intersections logged.	Geological logs were completed for all drilled intervals.
SUB-SAMPLING TECHNIQUES AND SAMPLE PREPARATION	If core, whether cut or sawn and whether quarter, half or all core taken.	<p>No information is available on moisture content of non-core samples or how the drilled material was sampled for historic drilling.</p> <p>No details of the laboratory preparation of samples were recorded for historic drilling. It is assumed that sample preparation methods used by all commercial laboratories followed the basic steps of drying, crushing, and pulverising, but details of the amount of the sample crushed and pulverised are not known. Therefore, it is not possible to assess the quality and appropriateness of the sample preparation techniques.</p> <p>Ballymore drilling: Ballymore cut core samples in half or quarter using a diamond saw and where appropriate used geological contacts or mineralisation to define sample intervals.</p>
	If non-core, whether riffled, tube sampled, rotary split, etc and whether sampled wet or dry.	<p>No information is available on moisture content of non-core samples or how the drilled material was sampled for historic drilling.</p> <p>Ballymore drilling: Sampling was collected via riffle splitting; RC drilling was stopped when water was encountered and holes were switched to diamond core..</p>
	For all sample types, the nature, quality, and appropriateness of the sample preparation technique.	<p>No details of the laboratory preparation of samples were recorded for historic drilling. It is assumed that sample preparation methods used by all commercial laboratories followed the basic steps of drying, crushing, and pulverising, but details of the amount of the sample crushed and pulverised are not known. Therefore, it is not possible to assess the quality and appropriateness of the sample preparation techniques.</p> <p>Ballymore drilling: Half core was submitted to the laboratory, generally 2 – 3 kg per sample. All of the core was dried, crushed to -6 mm, then pulverised to 85% - 75 µm. This method is considered appropriate for mineralisation that may have visible gold mineralisation.</p>

CRITERIA	JORC Code Explanation	Commentary
	Quality control procedures adopted for all sub-sampling stages to maximise representivity of samples.	No information has been recorded that documents quality control procedures adopted for all sub-sampling stages to maximise representivity of samples for historic drilling. Ballymore drilling: Drill core samples of cut core were consistently taken from the same side of the orientation line on the core to maintain consistency. All of the sample was crushed and pulverised to maximise sample representativity. Pulverised samples were tested for compliance to grinding specifications at the rate of 1 in 40
	Measures taken to ensure that the sampling is representative of the in situ material collected, including for instance results for field duplicate/second-half sampling.	No information has been recorded for historic drilling that documents measures taken to ensure that the sampling is representative of the in situ material collected. Ballymore drilling: QA/QC procedures included the insertion of quarter core field duplicates at the insertion rate of 1 in 20 samples. Field blanks were also submitted to the laboratory.
	Whether sample sizes are appropriate to the grain size of the material being sampled.	No formal assessment has been undertaken to quantify the appropriate sample size required for good quality determination of gold or base metal content, given the nature of the gold and base metal mineralisation.
QUALITY OF ASSAY DATA AND LABORATORY TESTS	The nature, quality and appropriateness of the assaying and laboratory procedures used and whether the technique is considered partial or total.	No information has been recorded that documents the nature, quality, and appropriateness of assaying methods used for any of the drilling programs. Ballymore soil, stream and rock chip samples were analysed at ALS Townsville using a multi-element suite by aqua regia digestion and ICP-MS finish. For most elements, this is considered as a total analysis. Gold was analysed with a 50 g charge used for fire assay with an ICP-AES determination. Normally the gold analysis would be considered a total analysis.
	For geophysical tools, spectrometers, handheld XRF instruments, etc, the parameters used in determining the analysis including instrument make and model, reading times, calibrations factors applied and their derivation, etc.	Ballymore used a pXRF instrument for its Ruddygore, Maniopota and Torpy's Crooked Creek soil programs. Soil samples were sieved to -80# and a 150 g sample was collected. Samples were analysed using an Olympus Vanta C Series (TL-WN725N) portable XRF analyser. Samples were analysed for Ag, As, Bi, Ca, Cd, Cl, Co, Cr, Cu, Fe, Hg, K, Mn, Mo, Nb, Ni, P, Pb, Rb, S, Sb, Se, Sn, Sr, Th, Ti, U, V, W, Y, Zn, Zr. The pXRF instrument is calibrated and serviced annually, with daily calibration completed as a minimum. At the start of each sampling session, standards are analysed. Sample material remains in storage for analytical re-assay as required. The Ruddygore Dipole-Dipole IP survey completed at Ruddygore prospect by Ballymore in September-October 2021 was undertaken using a GDD Model TX 4 20A/5000W/2400V transmitter and Smartem 16 Channel receiver. Seven 3km lines were surveyed. The northern most traverse was collected using a 50m Dipole-Dipole (Tx & Rx) configuration to an "n" level of n=10. The remaining six traverses were collected using a 100m Dipole-Dipole (Tx & Rx) configuration to an "n" level of n=8. The data is of high quality with strong signal levels resulting in coherent decays and good repeatability. MagSpec flew an airborne magnetic and radiometric survey in 2021 on behalf of Ballymore at 50m line spacing and 50m flight height. Two areas were collected: Chillagoe North and Chillagoe South. The Maniopota EM Survey was completed with the SkyTEM helicopter time-domain AEM system. The SkyTEM312HP system uniquely acquires at transmitter frequencies as low as 12.5Hz, using a high-power square wave form for enhanced resolution, a wide transmitter pulse width for greater target energisation, and long transmitter off times for imaging deep and conductive targets.
	Nature of quality control procedures adopted (e.g., standards, blanks, duplicates, external laboratory checks) and whether acceptable levels of accuracy (i.e., lack of bias) and precision have been established.	No details of the use of standards or certified reference materials have been reported for historic work. When undertaking pXRF surveys, Ballymore applied its QA/QC procedures and checked standards prior to commencing surveying on a daily basis as well as routinely testing for drift during the day by regularly checking standards.

CRITERIA	JORC Code Explanation	Commentary
VERIFICATION OF SAMPLING AND ASSAYING	The verification of significant intersections by either independent or alternative company personnel.	It has not been possible to independently verify significant intersections to date.
	The use of twinned holes.	There has been no use of twinned holes to date.
	Documentation of primary data, data entry procedures, data verification, data storage (physical and electronic) protocols.	Ballymore has collated and created a digital database of previous exploration completed at the Project. Ballymore drilling: Primary logging data was recorded digitally onto electronic spread sheets and validated against code tables by the logging geologist. Primary analytical data was received electronically in csv file format and imported directly into an electronic assay register spread sheet. Data validation was conducted by comparing the spreadsheet data against the Certificate of Analysis supplied as a secured pdf file by the laboratory.
	Discuss any adjustment to assay data.	No adjustments to assay data have been made.
LOCATION OF DATA POINTS	Accuracy and quality of surveys used to locate drill holes (collar and down-hole surveys), trenches, mine workings and other locations used in Mineral Resource estimation.	No details of the accuracy and quality of surveys used to locate drill holes (collar and down-hole surveys) is recorded. Drillhole collar locations were typically based on local grids and the accuracy of drill collars has not been verified to date. Ballymore surface geochemical sampling is surveyed using a handheld GPS with a location error of +/- 5m. Ballymore surface drilling: Drillhole collar locations were initially set out (and reported) using a handheld GPS with a location error of +/- 5m. All holes were subsequently surveyed by contract surveyor to a sub-metre accuracy, with data supplied electronically as spreadsheets and pdf files. The azimuth and dip at the start of the hole was recorded using a line of sight Suunto compass and Suunto clinometer by the site geologist. The orientation and dip of drillholes are measured with downhole surveys @ 15 m, 30 m, then every 30 m using a REFLEX single/multi-shot survey tool. End of hole surveys were also taken for each hole. At hole completion, holes were gyro surveyed. Ballymore AEM Survey: The SkyTEM survey was completed with all data located via on-board DGPS.
	Specification of the grid system used.	The co-ordinate system used is MGA94 zone 55 Datum.
	Quality and adequacy of topographic control.	Quality of the surface topographic control data is poor and is currently reliant on public domain data.
DATA SPACING AND DISTRIBUTION	Data spacing for reporting of Exploration Results.	Drilling: There is a small amount of drilling to date and the spacing of drillhole data is variable. Maniopota AEM Survey: The AEM survey was flown at 200m spacing in a NE-SW orientation.
	Whether the data spacing and distribution is sufficient to establish the degree of geological and grade continuity appropriate for the Mineral Resource and Ore Reserve estimation procedure(s) and classifications applied.	There are no Mineral Resources or Ore Reserves. There is insufficient drill spacing to establish the degree of geological and grade continuity appropriate for Mineral Resource and Ore Reserve estimation.
	Whether sample compositing has been applied.	No sample compositing was carried out on site. For reporting purposes, some drill hole assay results have been composited together to report contiguous zones of mineralisation.
ORIENTATION OF DATA IN RELATION TO GEOLOGICAL STRUCTURE	Whether the orientation of sampling achieves unbiased sampling of possible structures and the extent to which this is known, considering the deposit type.	The majority of previous drill holes were drilled vertically and are not considered to be oriented appropriately to drill across mineralisation. Further drilling is required to establish the optimal orientation of drilling at Ruddygore, Maniopota, and Torpy's Crooked Creek.

CRITERIA	JORC Code Explanation	Commentary
		Potential exists for sampling bias to have been introduced in the drilling completed to date due to the vertical nature of the drilling.
	If the relationship between the drilling orientation and the orientation of key mineralised structures is considered to have introduced a sampling bias, this should be assessed and reported if material.	It is possible there could be sampling bias due to the orientation of drilling but due to the lack of drilling to date this has not been ascertained.
SAMPLE SECURITY	The measures taken to ensure sample security.	No chain of custody is documented for previous drilling. For Ballymore sampling programs, all work was supervised by company staff. Samples were double bagged, palletised and shrink wrapped at the core shed before dispatch to the laboratory.
AUDITS OR REVIEWS	The results of any audits or reviews of sampling techniques and data.	Ballymore programs: Internal auditing procedures and reviews were regularly undertaken on sampling techniques, standard operating procedures, and laboratory processes. Derisk has completed a review of the work Ballymore has undertaken.

Reporting of Exploration Results

CRITERIA	JORC Code explanation	Commentary
MINERAL TENEMENT AND LAND TENURE STATUS	Type, reference name/number, location and ownership including agreements or material issues with third parties such as joint ventures, partnerships, overriding royalties, native title interests, historical sites, wilderness or national park and environmental settings.	The Project tenements comprise EPM 14015, EPM 15047, EPM 15053, and EPM 27840. All licences are 100% held by Ballymore Resources Limited.
	The security of the tenure held at the time of reporting along with any known impediments to obtaining a licence to operate in the area.	All tenements are in good standing.
EXPLORATION DONE BY OTHER PARTIES	Acknowledgment and appraisal of exploration by other parties.	The Ruddygore Mine was mined from 1896 – 1909 by open cut and shaft access to underground. The mine yielded 1,450 tons of copper from 32,750 tons of handpicked ore. The Torpy's Crooked Creek mine operated from 1904 – 1907 and 1912 – 1914. Production figures have not been located for 1904 – 1907 but from 1912 – 1914 the mine yielded 6,000 tons of ore for 84,000 oz silver and 920 tons of lead. The Maniopota mine was mined for lead, zinc, and silver. No production records have been found for the area but it hosts a series of small pits over 1 km strike length. Numerous exploration permits and mining leases have been held over parts and/or all of the Project area. Previous exploration has included geological mapping, soil and rock chip geochemical sampling, airborne and ground geophysics, plus RC and diamond drilling. Major programs included:

CRITERIA	JORC Code explanation	Commentary
		<ul style="list-style-type: none"> ▪ Mount Isa Mines (1959 – 1961) completed magnetic and EM surveys and diamond drilling (9 diamond drillholes for 655 m) at Ruddygore. ▪ Kennecott Exploration Australia (1965 – 1967) completed a geochemical survey over Ruddygore. ▪ Mines Exploration (1966 – 1971) completed geological mapping and channel sampling and drilling (3 holes for 598 m) at Maniopota. ▪ Cyprus Mines Corporation (1969 – 1970) completed mapping, geochemical surveys, IP and magnetic surveys and diamond drilling at Ruddygore (two holes for 182.88 m). ▪ LE Nickel (1976 – 1977) completed mapping and two diamond drillholes at Torpy’s Crooked Creek for 421.6 m. ▪ BP Mining Development Australia (1977 – 1978) completed airborne and ground magnetics and radiometrics surveys. ▪ AOG Minerals (1980 – 1982) completed EIP survey, rock and soil sampling, costeaning and drilling at Ruddygore (four drillholes for 469.1 m). ▪ Cyprus Mines Corporation (1986 – 1989) completed open hole percussion drilling around Ruddygore pit (11 holes for 324 m). ▪ Dominion Mining Limited/Stuart Foster (1991 – 1993) completed a ground magnetic survey, channel sampling at Maniopota and RC drilling (11 holes for 461 m). ▪ CRA Exploration (1993 – 1995) completed an EM survey over the Torpy’s Mine and drilled 12 holes for 1,027 m at Metal Creek.
GEOLOGY	Deposit type, geological setting, and style of mineralisation.	<p>The Chillagoe District is situated within the Middle Palaeozoic Hodgkinson Province which is the northernmost part of the Tasmanides in eastern Australia.</p> <p>Ballymore considers that the Ruddygore Project is prospective for large tonnage multi-element deposits including (a) copper-gold porphyry deposits e.g., Ruddygore (b) copper-gold-lead-zinc skarn deposits e.g., Red Dome, Mungana, Maniopota (c) sediment-hosted massive sulphide lead-zinc-silver e.g., Torpy’s Crooked Creek, and (d) gold IRGS deposits e.g., Kidston.</p>
DRILL HOLE INFORMATION	<p>A summary of all information material to the understanding of the exploration results including a tabulation of the following information for all Material drill holes:</p> <ul style="list-style-type: none"> – Easting and northing of the drill hole collar. – Elevation or RL (Reduced Level – elevation above sea level in metres) of the drill hole collar. – Dip and azimuth of the hole. – Down hole length and interception depth. – Hole length. 	<p>Not applicable.</p>
	If the exclusion of this information is justified on the basis that the information is not Material	Not Applicable.

CRITERIA	JORC Code explanation	Commentary
	<p>and this exclusion does not detract from the understanding of the report, the Competent Person should clearly explain why this is the case.</p>	
<p>DATA AGGREGATION METHODS</p>	<p>In reporting Exploration Results, weighting averaging techniques, maximum and/or minimum grade truncations (e.g., cutting of high grades) and cut-off grades are usually Material and should be stated.</p>	<p>The mineralised drill intersections are reported as downhole intervals and were not converted to true widths. True widths may be up to 50% less than drill intersections pending confirmation of mineralisation geometry. No capping of high grades was performed in the aggregation process.</p>
	<p>Where aggregate intercepts incorporate short lengths of high-grade results and longer lengths of low-grade results, the procedure used for such aggregation should be stated and some typical examples of such aggregations should be shown in detail.</p>	<p>The drill intercepts reported as Exploration Results were calculated using different criteria depending on the nature of the mineralisation. For base metal mineralisation 0.1% Zn, 0.5% Zn and 1.0% Zn have been applied for reporting.</p>
	<p>The assumptions used for any reporting of metal equivalent values should be clearly stated</p>	<p>No reported exploration results. For all previous exploration results refer to ASX releases. The dominant composite length is 1m. No top-cut or capping was applied.</p>
<p>RELATIONSHIP BETWEEN MINERALISATION WIDTHS AND INTERCEPT LENGTHS</p>	<p>These relationships are particularly important in the reporting of Exploration Results.</p>	<p>Previous drilling was planned on local grid lines and most drill holes were vertical. The limited drilling to date means the relationships between mineralisation widths and intercept lengths is poorly understood.</p>
	<p>If the geometry of the mineralisation with respect to the drill hole angle is known, its nature should be reported.</p>	<p>Ruddygore prospect is a porphyry copper style with veining and brecciation occurring in fine- and medium-grained intrusives that strike north-northwest and are steeply dipping as well as in sub-horizontal fractures. Almost all holes drilled to date were vertical holes, which is not optimal for testing this style of deposit. Maniopota prospect is Cu-Pb-Zn-Ag-Au mineralisation associated with skarn alteration along the contact of the Almaden Granodiorite and the Chillagoe Formation, which varies from north-south to northwest-southeast, typically dipping moderately towards the southwest. All except 1 of the 14 holes have been drilled towards the northeast, which is approximately perpendicular to the target. The orientation and extent of the Torpy's Crooked Creek Pb-Zn-Ag sediment-hosted prospect deposit is poorly understood. Two holes have been drilled, both towards the north-northeast. Further work is required to establish the optimal angle to test the mineralisation.</p>
	<p>If it is not known and only the down hole lengths are reported, there should be a clear statement to this effect (e.g., 'down hole length, true width not known').</p>	<p>The mineralised intercepts generally intersect the interpreted dip of the mineralisation at a high angle but are not true widths.</p>

CRITERIA	JORC Code explanation	Commentary
DIAGRAMS	Appropriate maps and sections (with scales) and tabulations of intercepts should be included for any significant discovery being reported. These should include but not be limited to a plan view of drill hole collar locations and appropriate sectional views.	Refer to figures contained within this report.
BALANCED REPORTING	Where comprehensive reporting of all Exploration Results is not practicable, representative reporting of both low and high grades and/or widths should be practiced to avoid misleading reporting of Exploration Results.	Balanced reporting of Exploration Results is presented within this report.
OTHER SUBSTANTIVE EXPLORATION DATA	Other exploration data, if meaningful and material, should be reported including (but not limited to): geological observations; geophysical survey results; geochemical survey results; bulk samples – size and method of treatment; metallurgical test results; bulk density, groundwater, geotechnical and rock characteristics; potential deleterious or contaminating substances.	The Project includes a large amount of exploration data collected by previous companies, including regional stream sediment geochemical data, soil sample and rock chip data, geological mapping data, drilling data, geophysical survey data, and costean data. Much of this data has been captured and validated into a GIS database. Previous mining has been limited and involved very selective mining and hand sorting. No systematic data has been collected to date to assess metallurgy and mining parameters relevant to a modern operation.
FURTHER WORK	The nature and scale of planned further work (e.g., tests for lateral extensions or depth extensions or large-scale step-out drilling).	Ballymore plans to conduct surface geological mapping and geochemistry, ground geophysics and drilling across various high-priority target areas over the next two years.
	Diagrams clearly highlighting the areas of possible extensions, including the main geological interpretations and future drilling areas, provided this information is not commercially sensitive.	Refer to figures contained within this report.